

GENERAL INDUSTRIES AND OUR SERVICES



UMEKA SOLUTECH CO., LTD.

UMEKA SOLUTECH CO., LTD.

บริษัท ยูเมก้า โซลูเทค จำกัด

www.umekasolutech.com

+66 6 1078 7976

sales@umekasolutech.com

SCREW PUMPS



PROGRESSIVE CAVITY PUMPS

- FOOD PUMP
- WIDE THROAT PUMP
- DOSING PUMP



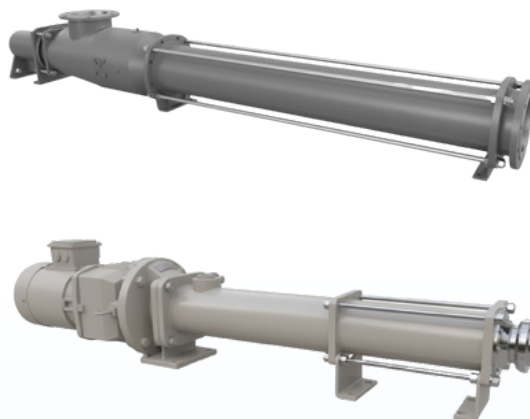
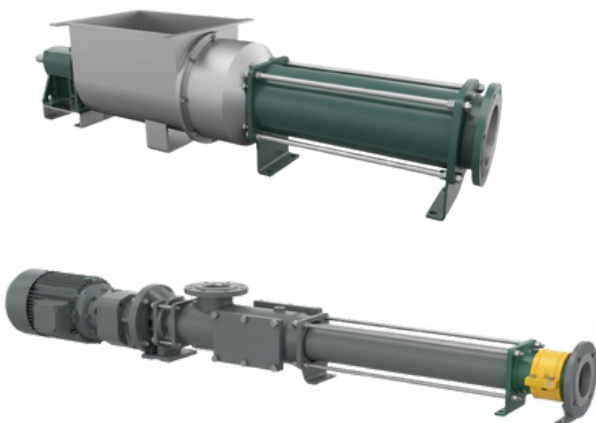
Capacity: Up to 500 m³/hr (2,200 GPM)

Pressure: Up to 48 bar (700 PSI)

Viscosity: Up to 3,000,000 cSt

APPLICATIONS :

- WASTEWATER APPLICATIONS
- PROCESS APPLICATIONS
- SLURRY APPLICATIONS



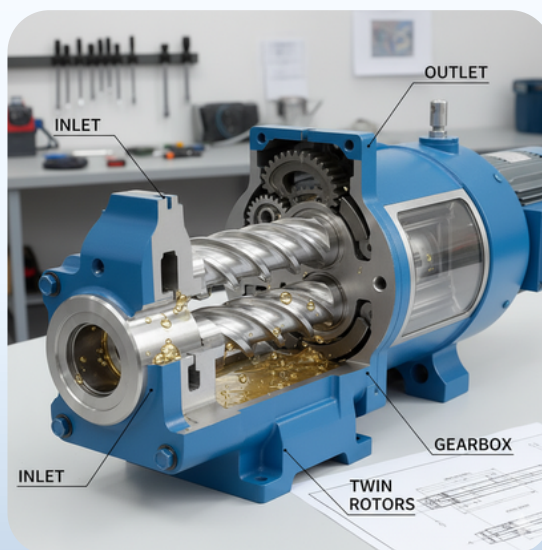
TWIN SCREW PUMPS

- LONG SHAFT STEAM JACKETED PUMP
- LONG SHAFT PUMP
- VERTICAL TWIN SCREW PUMP
- SHORT SHAFT PUMP

Capacity: Up to 940 m³/hr (4,140 GPM)

Pressure: Up to 30 bar (435 PSI)

Viscosity: Up to 100,000 cSt



SUPPLY AND ASSEMBLY PUMPS

PRODUCTS FOR SUPPLY:

- FIRE WATER PUMP
- CENTRIFUGAL PUMP



FIRE WATER PUMP



PRESSURE TANK

BesTank

WORKING PRESSURE :
10, 16, 25 BARS



Vess-Inno

WORKING PRESSURE :
10, 16, 25 BARS



HydroLine

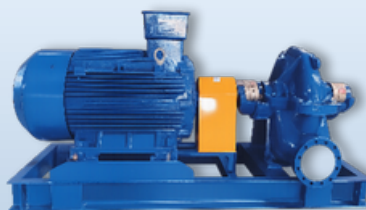
WORKING PRESSURE :
UP TO 10 BARS



ASSEMBLY PUMPS



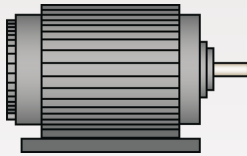
BOOSTER PUMPS



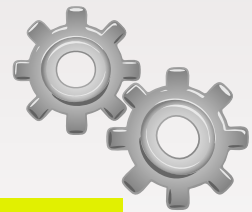
TRANSFER PUMPS



MOBILE PUMPS



SIEMENS



FLENDER

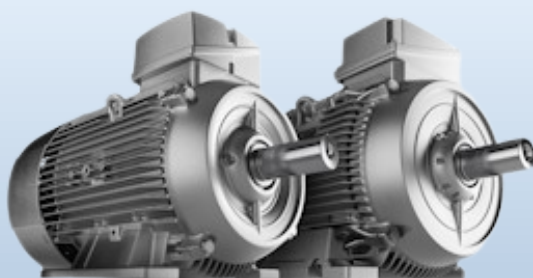
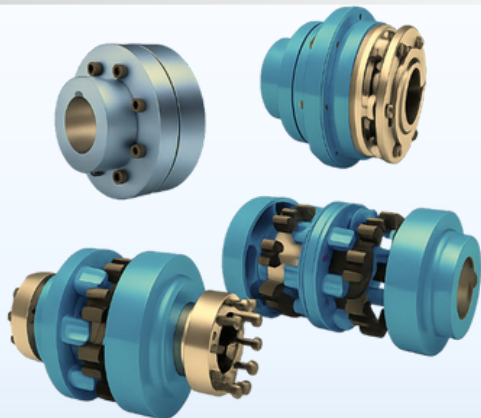
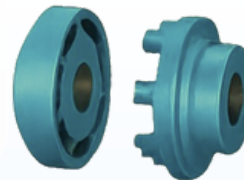
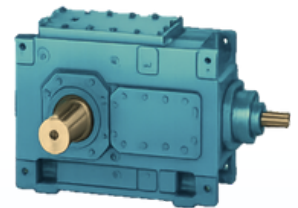
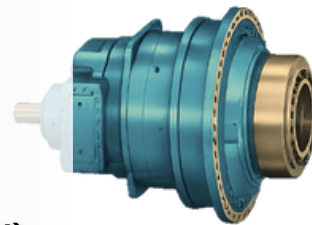
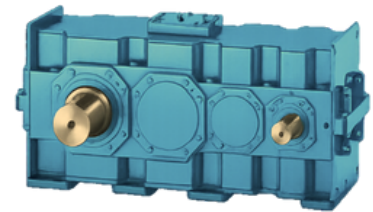
A Siemens Company

INNOMOTICS

A Siemens Business

PRODUCTS FOR SUPPLY:

- SOFT STARTER (**SIEMENS**)
- INVERTER (**SIEMENS**)
- MOTOR (**SIEMENS**)
- GEARED MOTOR (**SIEMENS**)
- GEARBOX (**FLENDER**)
- COUPLING (**FLENDER**)
- SYSTEM AUTOMATION, PLC, HMI (**SIEMENS**)
- SERVO DRIVE & MOTOR (**SIEMENS**)
- FOR INDUSTRIAL PROCESS
- EX-PROOF MOTOR (**MARELLIMOTORI**)
- BACKSTOP, SHRINK DISC, BRAKE (**RINGSPANN**)
- PLANETARY GEAR
- SURFACE AERATOR
- OVERHAUL, REPAIR, INSTALLATION
- PROCESS INSTRUMENTATION (**SIEMENS**)



SUPPORT • ENGINEERING • DESIGNS



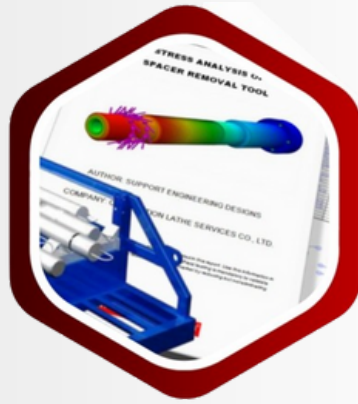
TOOL & EQUIPMENT LIFTING GEAR



PLANT / PROCESS DESIGN



AUTOMATION MACHINE



CAD / CAM / CAE / RP / R&D



● DESIGN & DRAWING :

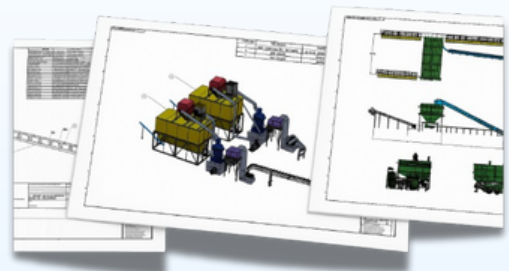
TOOL/ONSHORE-OFFSHORE CONTAINER/MECHANICAL PARTS

● INDUSTRY DETAIL :

DESIGN/SYSTEM/PROCESS

● PROJECT :

INDUSTRY DETAIL/SYSTEM/PROCESS/MACHINE



TIME MANAGEMENT



COST EFFICIENCY



ENGINEERING STANDARD

REMOVABLE INSULATION JACKET

หุ้มฉนวนกันความร้อนแบบถอดได้

APPLICATIONS FOR :

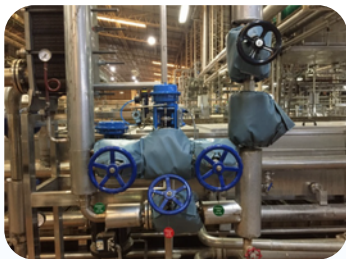
- INJECTION MACHINE
- EXTRUDER MACHINE
- RECYCLE PLASTICS MACHINE
- LAMINA FILM MACHINE
- TIRE PRESS MACHINE
- TURBINE
- PIPE AND VALVE SYSTEM



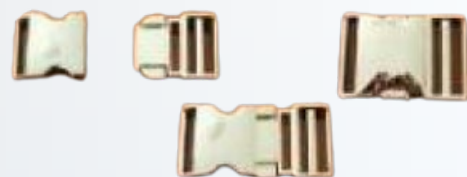
BEFORE



AFTER



INSULATION HOLDING EQUIPMENT :
HIGH-QUALITY STEEL CLAMP,
EASY TO ASSEMBLE AND REMOVE,
DURABLE AND STURDY.



LAYER 1:

INNER INSULATION LAYER
SILACA CLOTH 1100



LAYER 2 :

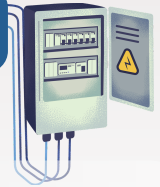
INTERMEDIATE INSULATION LAYER
CERAMIC FIBER BLANKET



LAYER 3:

OUTER INSULATION / PROTECTIVE LAYER
**FFT-3732-130P1 TEFLON COATED
FIBERGLASS FABRICS (PTFE)**

ELECTRICAL AND INSTRUMENT EQUIPMENT

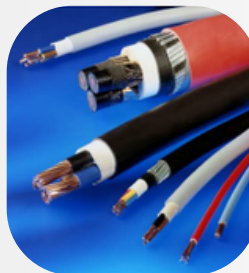


CABLE:

- BARE COPPER CABLE
- POWER CABLE
- BUILDING WIRE CABLE
- ALUMINUM CABLE
- INSTRUMENT CABLE

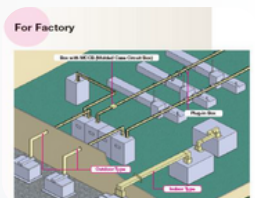
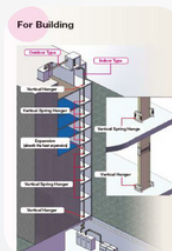
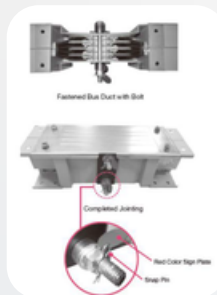


- CABLE GLAND
- JUNCTION BOXES
- ADAPTORS AND REDUCERS
- CABLE CLAMPS
- HEATSHRINK
- TERMINATION KIT
- CABLE JOINT



BUSDUCT:

- FOR BUILDING
- FOR FACTORY



CONDUIT:

- PVC
- ELECTRO
- HDG
- FLEXIBLE



LOCAL CONTROL STATION

PLUG & RECEPTACLE

- INDUSTRY TYPE, HAZARDOUS TYPE



WASTEWATER EQUIPMENT

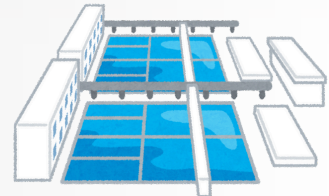
เครื่องเติมอากาศในระบบบำบัดน้ำเสีย



JET AERATOR

KEY FEATURES :

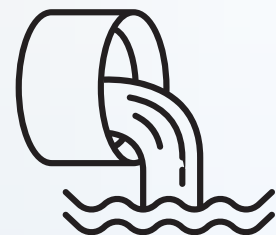
- **APPLICATION :** ALL WASTEWATER, SHRIMP/FISH PONDS, VILLAGES, GOLF COURSES, ETC.
- **DURABILITY :** LONG SERVICE LIFE, STAINLESS STEEL CONSTRUCTION
- **MOTOR :** IEC STANDARD, 1-50 HP, 0.75-37 KW
- **OXYGEN TRANSFER RATE :** 28 - 1,800 KGO2/DAY
- **AIR VOLUME :** 0.4 - 20.8 M3 / MIN
- **MIXING VOLUME :** 80 - 8,000 M3
- **COMPLETE MIXING DEPTH :** 1 - 8 M



LOW SPEED SURFACE AERATOR

KEY FEATURES :

- **APPLICATION :** WORKS WITH ALL WASTEWATER, DEPTH ≥ 2 M
- **GEAR MOTOR :** AGITATOR TYPE OR FLANGE TYPE
- **COATING :** EPOXY-COATED FOR LONG LIFE
- **MOTOR :** 1-50 HP, 0.75-37 KW
- **OXYGEN TRANSFER RATE :** 32 - 2,000 KGO2/DAY
- **PUMPING RATE :** 3 - 55 M3 / MIN
- **DIAMETER OF MIXING ZONE :** 4-30 M
- **COMPLETE MIXING DEPTH :** 1 - 8 M
- **DIAMETER OF EFFECTED ZONE :** 25-80 M



WASTEWATER EQUIPMENT

เครื่องเติมอากาศในระบบบำบัดน้ำเสีย



PADDLE WHEEL AERATOR

KEY FEATURES :

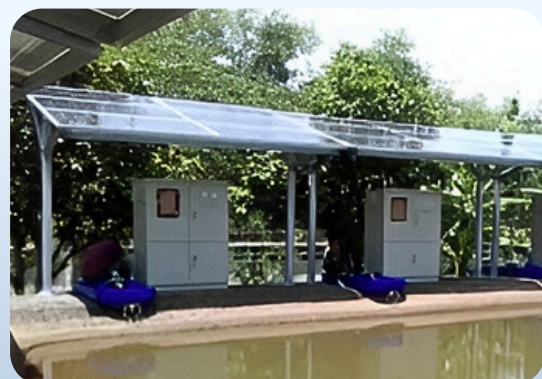
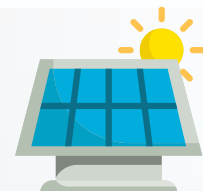
- **APPLICATION** : ALL WASTEWATER, SHRIMP/FISH PONDS, VILLAGES, GOLF COURSES, ETC.
- **EFFICIENCY** : ENERGY-SAVING, HIGH OXYGEN OUTPUT
- **BLADES** : 2-10
- **MOTOR** : 2 HP, 1.5 KW
- **OXYGEN TRANSFER RATE** : 38 - 57 KGO2/DAY
- **MIXING VOLUME** : 80-100 M3
- **WORKING DEPTH** : 1 - 1.5 M
- **DISTANCE** : 10-15 M



AERATOR BY SOLAR CELL

KEY FEATURES :

- SOLAR-POWERED AERATOR, CUSTOMIZABLE TO CLIENT REQUIREMENTS
- PRODUCTION BASED ON USAGE CONDITIONS
- CAN MANUFACTURE ACCORDING TO CUSTOMER-PROVIDED DESIGN
- ALTERNATIVELY, COMPANY CAN DESIGN AND PRODUCE TO MEET SPECIFIC PROCESS REQUIREMENTS
- AVAILABLE IN VARIOUS CONFIGURATIONS





UMEKA SOLUTECH CO., LTD.

UMEKA SOLUTECH CO., LTD.
บริษัท ยูเมก้า โซลูเทค จำกัด

28/18 Soi Laem Kratue, Sukhumvit Road,
Noen Phra, Mueang Rayong, Rayong 21150 Thailand.



+66 6 1078 7976



sales@umekasolutech.com



www.umekasolutech.com