

PRODUCT CATALOG



Familiar with the Petrochemical,
Contractor, and Refinery markets.



UMEKA SOLUTECH CO., LTD.

UMEKA SOLUTECH CO., LTD.

บริษัท ยูเมก้า โซลูเทค จำกัด

www.umekasolutech.com

+66 6 1078 7976

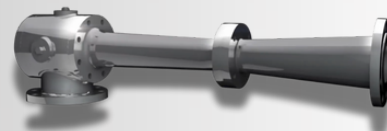
sales@umekasolutech.com



GRAHAM
ENGINEERING ANSWERS

PRODUCTS :

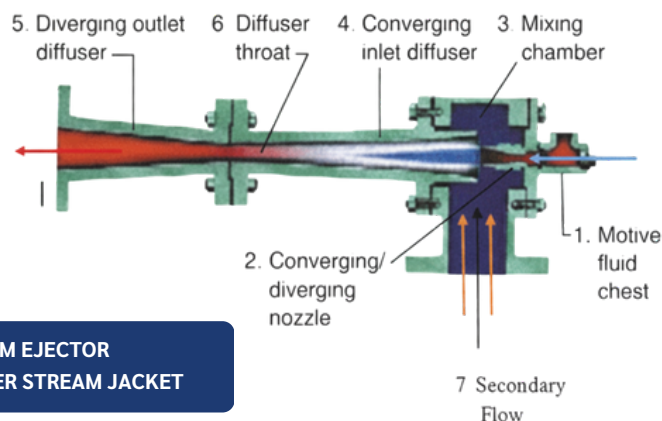
- EJECTORS
- SURFACE CONDENSERS
- LIQUID RING VACUUM PUMP
- PROCESS CONDENSERS



COUNTRY OF ORIGIN : USA

APPLICATIONS :

- THERMAL COMPRESSORS
- CHEMICAL PROCESSING
- PLASTICS, RESINS AND FIBERS
- REFINERY
- POWER GENERATION EQUIPMENT
- PETROCHEMICAL PROCESSES

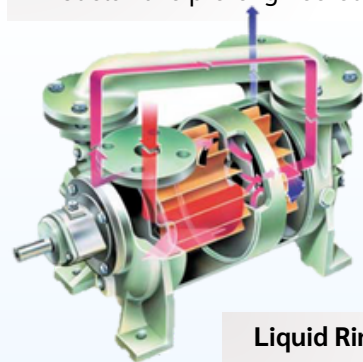


**HIGH VACUUM EJECTOR
WITH INLET DIFFUSER STREAM JACKET**

Steam Jet Ejectors :

Graham ejectors deliver simple, rugged, trouble-free vacuum performance using steam or organic vapors. Available in corrosion- and erosion-resistant materials, standard models have pre-engineered components, and custom sizes are also supported.

PUMP PACKAGE



LIQUID RING VACUUM PUMP



Liquid Ring Vacuum Pump :

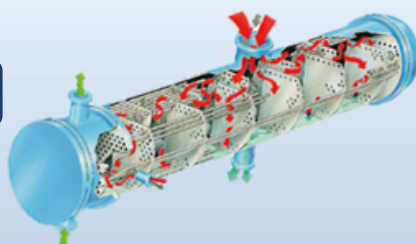
The Graham Liquid Ring Vacuum Pump delivers reliable performance under varying and harsh conditions, operating smoothly even with liquid in the suction or high inlet gas temperatures.

GRAHAM VACUUM SYSTEMS :

Can include both liquid ring vacuum pumps and steam jet ejectors.

For a highly efficient vacuum system that optimizes capital and operating costs.

VACUUM CONDENSER



Graham Condensers:

Reclaim valuable product, minimize pressure drop, and lower costs and environmental impact.





PRODUCTS :

- GAS COMPRESSOR
- RECIPROCATING COMPRESSOR
- HYDROGEN COMPRESSOR
- CNG COMPRESSOR
- PET COMPRESSOR
- SF6 RECOVERY SYSTEM
- SERVICE AND MAINTENANCE

COUNTRY OF ORIGIN : JAPAN



APPLICATIONS :

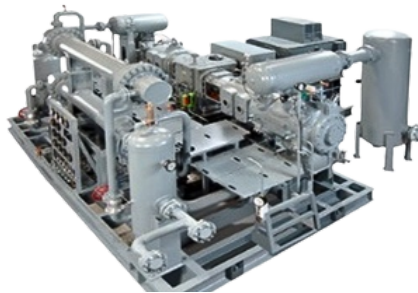
- OIL FREE AND OIL LUBRICATED COMPRESSOR
- GAS HANDLED :
H₂ , O₂ , N₂ , CO , CO₂ , SiCL₄ , SiHCL₃ ,
NH₃ , AR , HE , CH₄ , SF₆ , HCL , H₂S , AIR.

Industries :

- Petroleum industry: Refining, Hydrogenation
- Petrochemical industry: Ethylene, PE/PP, Synthetic gas plant
- Coal industry: CTO/MTO plant, Fertilizer industry
- Electric power industry: Gas cylinder filling, Nuclear power station



HD2B-400GH-OL



HDB-400GH-OL



YQ3-45L

Compressor type :

- Vertical (VS, VD, VT)
- Inclined Y/W/X type
- Horizontal/Balanced-opposed type

FRAME LINEUP :



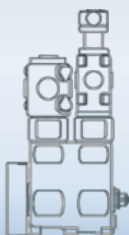
HS TYPE



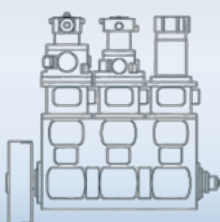
HD TYPE



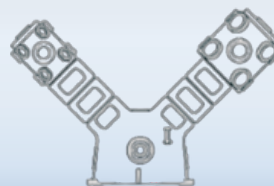
VS TYPE



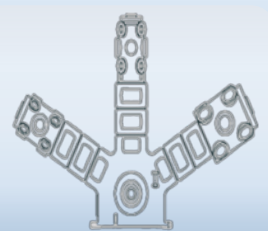
VD TYPE



VT TYPE

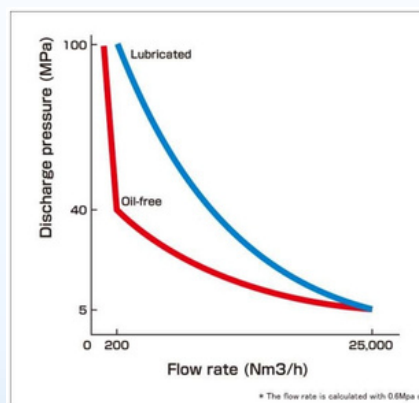


YD TYPE



WT TYPE

PERFORMANCE RANGE :



No. of Stage	1 ~ 5
Capacity	Up to 25,000 Nm ³ /h
Suction Volume	Up to 5,000 m ³ /h
Disch. Pressure	
Lubricated	Up to 1100 bar
Non-lubricated	Up to 1100 bar
Power	1000 kW
Allowable rod load	200 kN
Cylinder Configuration	Vertical
	Inclined Y/W/X
	Horizontal
Cylinder Action	Horizontal Balanced-opposed
	Double Acting
	Single Acting
	Tandem



mitsui E&S

PRODUCTS :

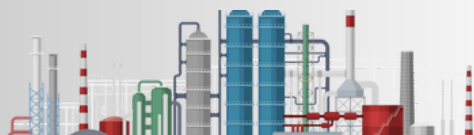
- RECIPROCATING COMPRESSOR
- AXIAL FLOW COMPRESSOR

COUNTRY OF ORIGIN : JAPAN

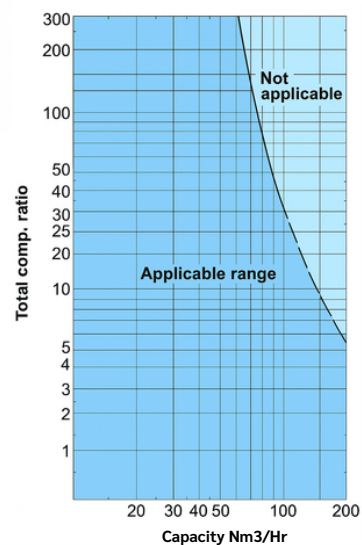
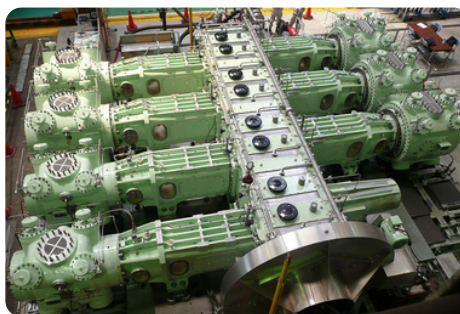
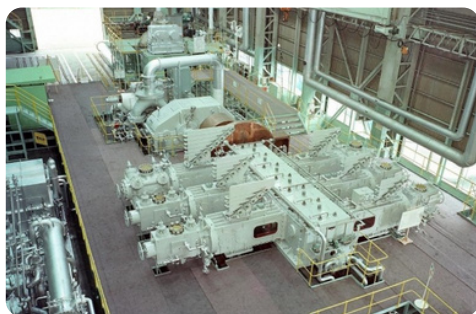


APPLICATIONS :

- OIL-RELATED INDUSTRIES
- STEEL INDUSTRIES



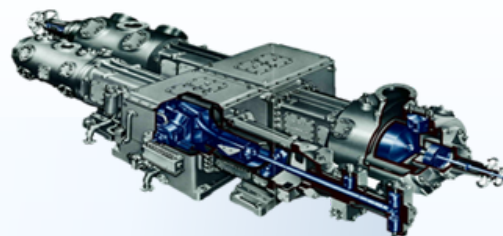
RECIPROCATING COMPRESSOR



Capability :

- Pressure range : Up to 600kg/cm²G
- Flow volume : 0.12 to 400m³ /min. at suction
- Power range : 50kW to 18,000KW

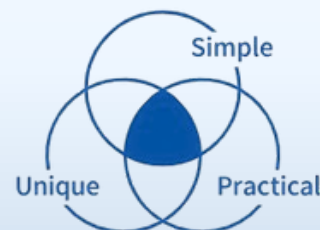
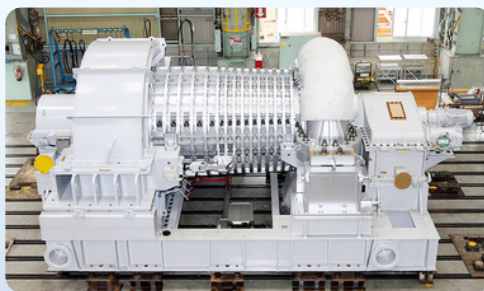
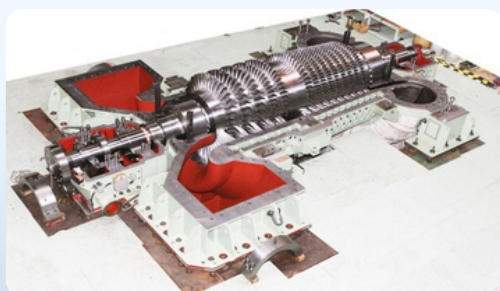
RECIPROCATING COMPRESSOR (TYPE: C457)



Main Features :

- Opposite Type for easy maintenance with good weight balance
- Compliance with API standard
- Valves of Hoerbiger (Austria), leading manufacturer of compressor valve, are used as standard
- Selection of the most appropriate type out of wide variety (Large - Small Size, at 40kW-24,800kW)

AXIAL FLOW COMPRESSOR



Main Features :

- Developed and manufactured by MES-M
- 50% are reaction type blade
- Single casing of horizontal split type is applied ensuring easy maintenance
- Wide range of maneuverability by using variable stationary blades
- Applicable to any mover whether such is steam turbine or synchronized motor

PRODUCTS :

- INDUSTRIAL AIR COMPRESSORS
- ENGINEERED AIR COMPRESSORS

COUNTRY OF ORIGIN : USA, CHINA

INDUSTRIAL AIR COMPRESSORS

APPLICATIONS :

- AIR SEPARATION
- CHEMICAL PROCESSING
- ELECTRONICS
- ELECTRIC CAR & BATTERY
- FOOD & BEVERAGE
- GLASS
- INDUSTRIAL MANUFACTURING
- LNG PRODUCTION & TRANSPORT
- MEDICAL & PHARMACEUTICAL
- OIL REFINING
- PETROCHEMICAL
- PLASTICS
- POWER GENERATION
- PULP & PAPER
- TEXTILES



P300

Flow: 25 – 60 m³/min
Power: 185 – 335 kW
Pressure: 2.75 – 10.5 barg



P400

Flow: 45 – 100 m³/min
Power: 300 – 600 kW
Pressure: 2.75 – 17.2 barg



P500

Flow: 70 – 130 m³/min
Power: 450 – 750 kW
Pressure: 2.75 – 10.5 barg



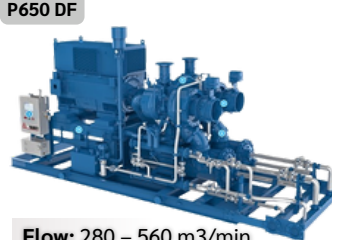
P600

Flow: 110 – 190 m³/min
Power: 520 – 1,120 kW
Pressure: 2.75 – 10.5 barg



P650

Flow: 25 – 60 m³/min
Power: 185 – 335 kW
Pressure: 2.75 – 10.5 barg



P650 DF

Flow: 280 – 560 m³/min
Power: 1,120 – 2,150 kW
Pressure: 2.1 – 3.5 barg

ENGINEERED AIR COMPRESSORS

PAP PLUS® S1



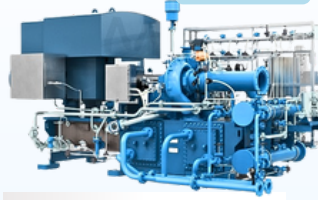
Flow: 25 – 60 m³/min
Power: 120 – 375 kW
Pressure: 2.75 – 12.1 barg

PAP PLUS® A1



Flow: 45 – 100 m³/min
Power: 190 – 595 kW
Pressure: 2.75 – 15.2 barg

PAP PLUS® BH



Flow: 100 – 200 m³/min
Power: 400 – 1,165 kW
Pressure: 2.75 – 14.9 barg

P700



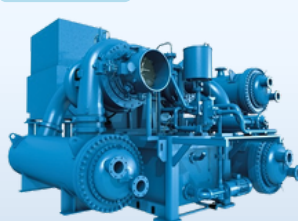
Flow: 170 – 340 m³/min
Power: 750 – 2,050 kW
Pressure: 2.75 – 10.5 barg

PAP PLUS® CH

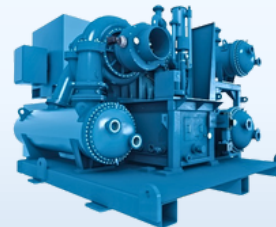


Flow: 155 – 340 m³/min
Power: 650 – 2,000 kW
Pressure: 2.75 – 14.3 barg

PAP PLUS® DH



Flow: 285 – 525 m³/min
Power: 835 – 4,100 kW
Pressure: 2.75 – 31 barg



PAP PLUS® EH

Flow: 425 – 695 m³/min
Power: 1,305 – 4,475 kW
Pressure: 2.75 – 25.2 barg

COMPRESSOR CONTROL SYSTEMS

R1000



R2000



R3000





PRODUCTS :

- ROTARY SCREW AIR COMPRESSORS
- RECIPROCATING AIR COMPRESSORS
- OIL-FREE COMPRESSORS
- VACUUM PUMPS
- ROTARY SCREW BLOWERS
- AIR TREATMENT AND ACCESSORIES

COUNTRY OF ORIGIN : USA, TAIWAN, CHINA



APPLICATIONS :

- GENERAL MANUFACTURING
- PLASTICS
- MINING
- CEMENT
- PET BOTTLE-BLOWING
- FOOD & BEVERAGE
- AUTOMOTIVE



FS-CURTIS :



ONE OF AMERICA'S FIRST AIR COMPRESSOR
MANUFACTURERS, INNOVATING SINCE 1854



ROTARY SCREW AIR COMPRESSORS

RECIPROCATING AIR COMPRESSORS



OIL-FREE COMPRESSORS

VACUUM PUMPS



ROTARY SCREW BLOWERS

AIR TREATMENT AND ACCESSORIES



AFTERMARKET SOLUTIONS



Filtersafe

PRODUCTS :

- COMPACT SCREEN FILTERS
- SINGLE SCREEN
- HIGH CAPACITY SINGLE SCREEN
- MULTI SCREEN

COUNTRY OF ORIGIN : ISRAEL

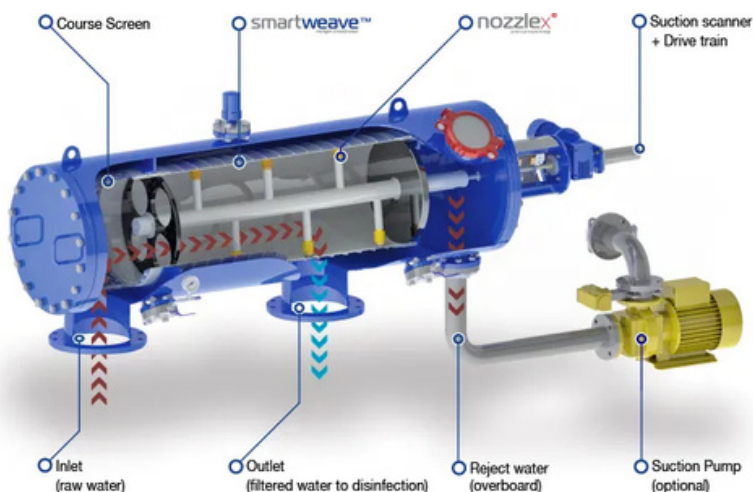


APPLICATIONS :

- INDUSTRIAL FILTRATION
- HIGH-END AGRICULTURE SECTOR
- AQUACULTURE SECTOR
- MUNICIPAL WATER TREATMENT
- OTHER INDUSTRIAL NEEDS

- Flow Rate range 35 -5,000 m³/hr.
- 1.6 bar (23 psi) minimum operating pressure
- The largest single screen filter on the market
- Compact design with very low flush-flow rate
- Supply filters from 10 microns upwards
- 10 - 100 micron Filtration Degree
- Horizontal & Vertical configurations
- 100% Screen Cleaning
- Small footprint

SIDE STREAM FILTER FOR COOLING TOWER



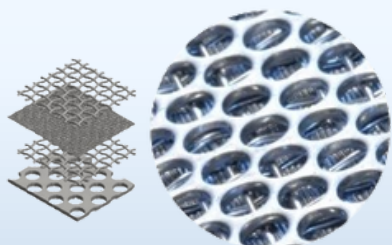
MULTI SCREEN



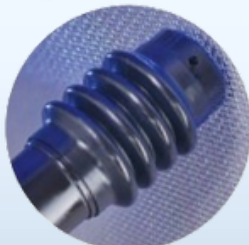
SINGLE SCREEN



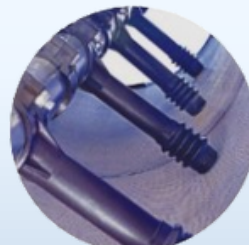
filtersafe TECHNOLOGY



+



=



smartweave™

HIGH PERFORMANCE
FILTRATION SCREENS:

1. MULTI-LAYERED SINTERED STRUCTURE
2. ENHANCED STRENGTH & DURABILITY
3. AVAILABLE IN 316L, 904L, SMO254

nozzlelex®

SELF-CLEANING CYCLE FOR
MAXIMUM REMOVAL EFFICIENCY:

1. SELF BALANCING CLEANING NOZZLE
2. HIGH EFFICIENCY CLEAN
3. ZERO SCREEN WEAR + REDUCED NOZZLE WEAR
4. LOW PRESSURE OPERATION

EVERCLEAR™

AN UNPARALLELED
AUTOMATIC FILTRATION
CYCLE.



PRODUCTS :

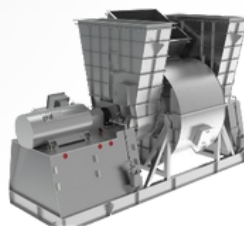
- FANS & BLOWERS
- CYCLONES & FILTERS
- SCREW CONVEYORS & MIXERS

COUNTRY OF ORIGIN : NETHERLANDS

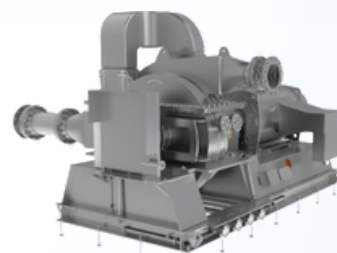
APPLICATIONS :

- AIRFLOW AND PRESSURE FOR INDUSTRIAL GASES.
- CLEAN AIR AND DUST REDUCTION
- CONVEYING MATERIAL

CHECK OUT OUR FANS AND BLOWERS



INDUSTRIAL FANS & BLOWERS



MULTI STAGE BLOWERS



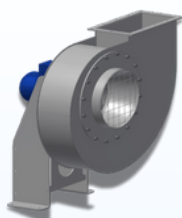
FLOW CONTROL AND MONITORING



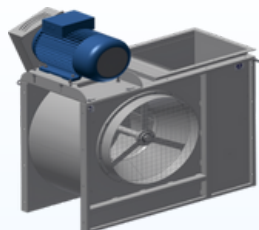
ANTI-SURGE CONTROL



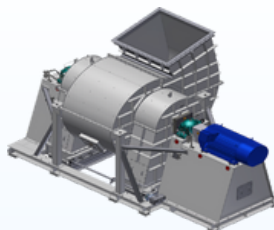
FANS & BLOWERS



K-TYPE



E-TYPE



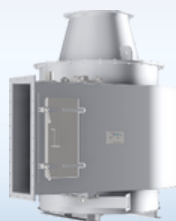
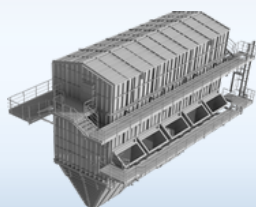
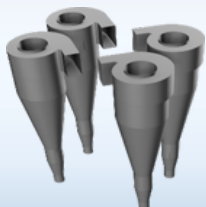
INDUSTRIAL FANS & BLOWERS

Fans for low-flow, low-medium pressure applications :

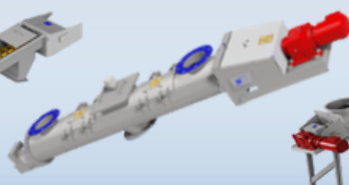
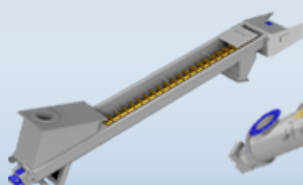
- Flow up to 15-100 m³/s
- Differential pressure up to 25,000 - 250,000 Pa
- Temperature range from -20 °C- +500 °C

CYCLONES & FILTERS & BARCOL SCRUBBER

For materials that cannot be filtered using conventional filtering techniques.



SCREW CONVEYORS & MIXERS



Applications :

- Filter systems ranging from 5 m² to 2,000 m²,
- The bag filters are used worldwide, in many cases specifically designed for THE SPECIFIC APPLICATION.

Screw conveyors :

Are used to transport bulk materials in horizontal, vertical or diagonal directions.

MIXING, RETENTION, CONDITIONING, COOLING, AND HEATING SCREWS

Options / variables :

screw conveying, paddle mixers, ribbon mixers, PERFORATED SCREW BLADES, INTERNAL FLOW FOR COOLING AND HEATING, PRESSURIZED MIXERS.

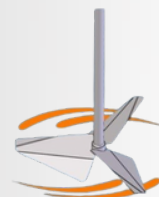


PRODUCTS :

- TOP ENTRY AGITATOR
- SIDE ENTRY TANK AGITATORS
- SANITARY TANK AGITATORS
- AGITATOR COMPONENTS :

- IMPELLER
- SEALS
- SHAFTS
- MOTORS & COUPLINGS

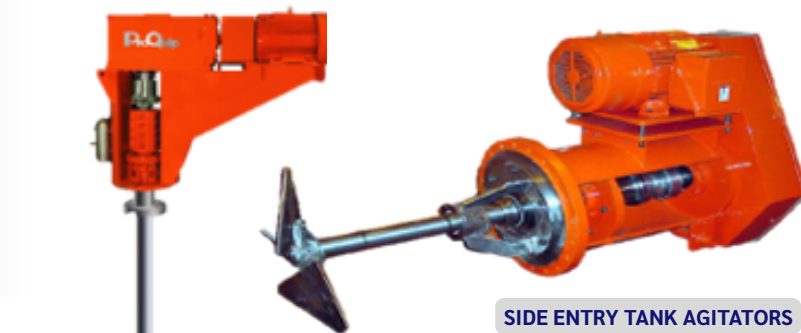
COUNTRY OF ORIGIN : USA



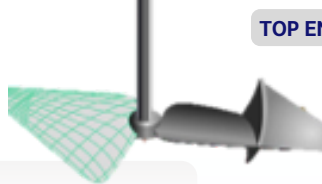
APPLICATIONS :

- LIQUID BLENDING
- SOLID SUSPENSION
- WASHING OR LEACHING
- GAS DISPERSION AND ABSORPTION
- DISPERSION
- HEAT TRANSFER
- CRYSTALLIZATION

PROQUIP TANK AGITATORS AND MIXERS



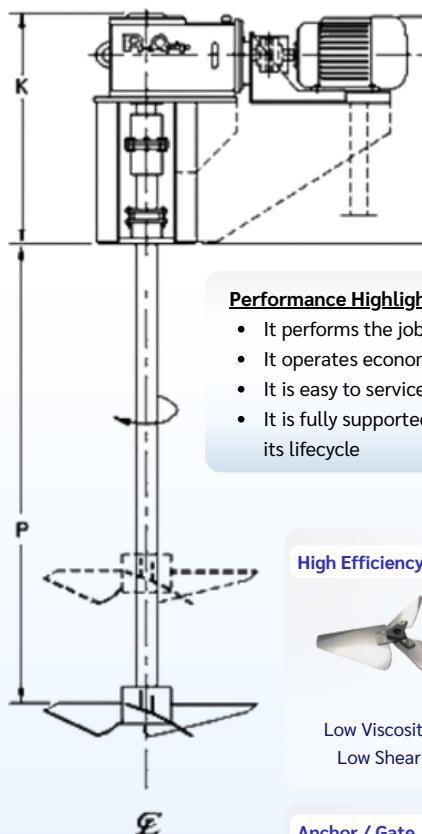
SIDE ENTRY TANK AGITATORS



TOP ENTRY TANK AGITATORS



SANITARY TANK AGITATORS



Performance Highlights

- It performs the job you need it to do
- It operates economically, reliably, and efficiently
- It is easy to service and maintain
- It is fully supported by the manufacturer throughout its lifecycle

PROQUIP HIGH PERFORMANCE IMPELLERS

High Efficiency Hydrofoil



Low Viscosity
Low Shear

High Solidity



Mid Viscosity
Low Shear

Double Pitched



Variable Viscosity
Low Shear

Axial Turbine



Radial Turbine



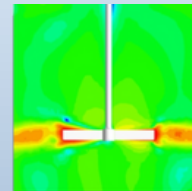
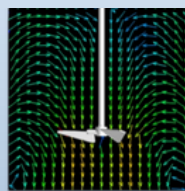
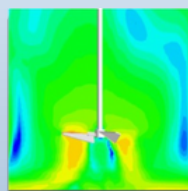
Low-High Viscosity
Mid-High Shear

Anchor / Gate / Double Helix



High Viscosity
Low Shear

COMPUTATIONAL FLUID DYNAMICS PLOTS



Green Energy Technology at
ProQuip

+66 6 1078 7976

www.umekasolutech.com

sales@umekasolutech.com



Industrial Noise Control



dBSilencer
DB ENGINEERING CO., LTD.

PRODUCTS :

- STEAM SILENCER
- GAS SILENCER
- FAN SILENCER
- STACK SILENCER
- STEAM BLOWING-OUT SILENCER

COUNTRY OF ORIGIN : KOREA

APPLICATIONS :

- STEAM VENT SILENCER
- SILENCER FOR GAS TURBINE
- SILENCER FOR DIESEL ENGINE
- SILENCER FOR GAS VENT STACK

STRUCTURE OF SILENCER

- Casing Part
 - Diffuser Part
 - Splitter Part
 - Rain Hood Part
 - The others (Support, Lifting Lug, Drain Valve)



STEAM SILENCER



STEAM SILENCER



GAS SILENCER



STACK SILENCER



FAN SILENCER



STEAM BLOWINGOUT SILENCER



HYOSUNG GOODSPRINGS

PRODUCTS :

- LINE UP, API PUMPS TYPE
- BOILER FEEDWATER, CIRCULATING, CONDENSATE PUMPS
- LINE UP, TURBINE TYPE, DOUBLE SUCTION
- INTAKE PUMPS, ERD PUMPS, PROCESS PUMPS
- HOT WATER CIRCULATION, PRESSURE BOOSTING, SUBMERSIBLE DRAINAGE

COUNTRY OF ORIGIN : KOREA

APPLICATIONS :

- OIL & GAS PLANT
- POWER PLANT
- INDUSTRIAL USE
- WATER INDUSTRY
- BUILDINGS AND HOUSES

ACCURATE PRODUCT
DIAGNOSIS



QUICK RESPONSE

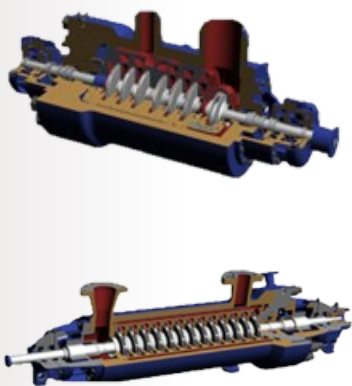


GLOBAL NETWORK



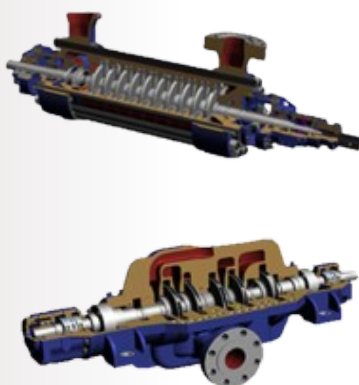
PUMPS FOR OIL & GAS PLANT

LINE UP, API PUMP TYPE



PUMPS FOR POWER PLANT

BOILER FEEDWATER, CIRCULATING, CONDENSATE PUMPS



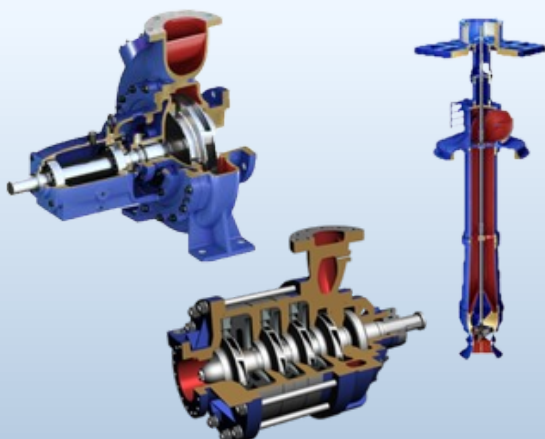
PUMPS FOR INDUSTRIAL USE

LINE UP, TURBINE TYPE, DOUBLE SUCTION



PUMPS FOR WATER INDUSTRY

INTAKE PUMPS, ERD PUMPS, PROCESS PUMP



PUMP FOR BUILDINGS AND HOUSES

HOT WATER CIRCULATION, PRESSURE BOOSTING, SUBMERSIBLE DRAINAGE





SEYANG

since 1980

PRODUCTS :

- DSH HEATLESS DESICCANT-TYPE AIR DRYER
- DSE EXTERNAL HEATER-TYPE DESICCANT AIR DRYER
- DSI INTERNAL HEATER-TYPE AIR DRYER
- DBP BLOWER-TYPE DESICCANT AIR DRYER
- DSN NON-PURGE TYPE AIR DRYER

AIR FILTER

ACTIVATED ALUMINA GEL

COUNTRY OF ORIGIN : KOREA

APPLICATIONS :

- GAS DEHYDRATION
- FILTRATION UNIT
- BUILDING UP REPUTATION IN THE NON-PURGE / ZERO-PURGE SYSTEM SECTOR

SEYANG AIR DRYER



DSH Heatless Type Air Dryer

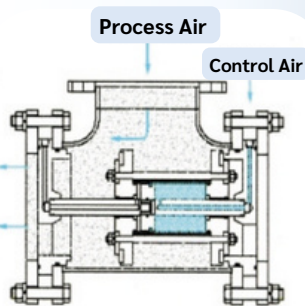


DSE / DSI Heater Type Air Dryer

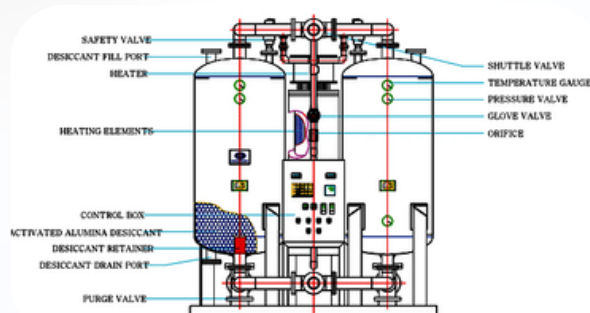
DSE / DSI HEATER TYPE AIR DRYER

PRODUCT FEATURES

- Stable dew point maintain
- Drying and regeneration processes are repeated at 10-minute intervals
- Design and construction can be customized
- Standard Model up to 9,372 Nm³/h can be operated
- Easy maintenance



DSH HEATLESS TYPE AIR DRYER



SEYANG AIR FILTER



PRODUCT FEATURES

Removal of solid impurities and oil of 5 - 0.01 micron

- Pre-filter (NH-3200) 100%
- After-filter (NH-3100)
- Coalescing-filter (NH-1300)
- Customized filtering rate can be applied

PRODUCT FEATURES

- Consumption of regeneration air 8 - 10%
- Stably sustained dew point temperature
- The drying and regeneration processes are cycled at 8-hour intervals
- Design and construction can be customized
- Standard Model up to 9,360 Nm³/h can be operated

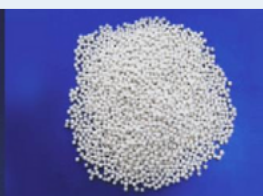
ACTIVATED ALUMINA GEL

Adsorbents for drying gas and liquids.

Even sized, high mechanical strength and smooth surface.



ACTIVE ALUMINA



MOLECULAR SIEVE



SILICA GEL



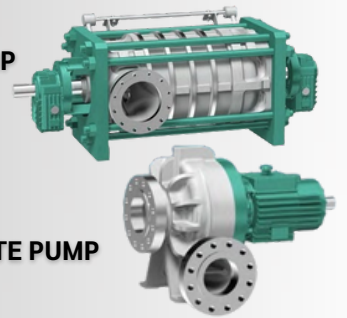
LOW TEMPERATURE
REGENERATION GEL



Kubota

PRODUCT

- HORIZONTAL SHAFT MIXED FLOW PUMP
- VERTICAL SHAFT MIXED FLOW PUMP
- AXIAL FLOW PUMP
- INLINED TUBULAR MIXED FLOW PUMP
- VOLUTE TYPE MIXED FLOW PUMP
- MULTI-STAGE DOUBLE SUCTION VOLUTE PUMP
- PUMP TURBINE



APPLICATIONS :

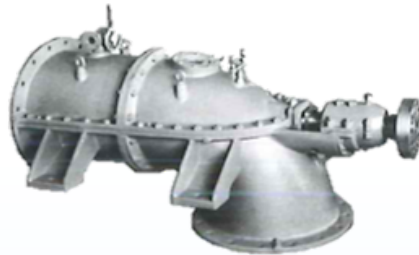
- COOLING WATER SYSTEM
- CITY & INDUSTRIAL WATER SUPPLY
- POWER PLANT
- FLOOD CONTROL , WATER INTAKE
- WATER TREATMENT PLANT
- CHEMICAL PLANT
- POWER GENERATION

PERFORMANCE RANGE :

- BORE : 200 ~ 4,600 MM.
- CAPACITY : 0.1 ~ 3,000 M3/MIN
- TOTAL HEAD : 1 ~ 150 M.



HORIZONTAL SHAFT MIXED FLOW PUMP



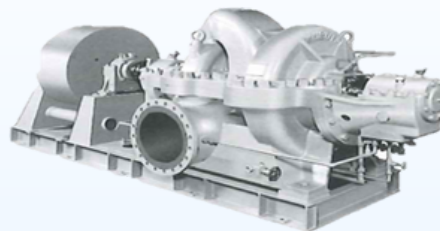
AXIAL FLOW PUMP



VERTICAL SHAFT MIXED FLOW PUMP



VOLUTE TYPE MIXED FLOW PUMP



MULTI-STAGE DOUBLE SUCTION VOLUTE PUMP



PUMP TURBINE



INLINED TUBULAR MIXED FLOW PUMP



seko

PRODUCTS :

- METERING PUMPS, DOSING PUMPS
- AIR-OPERATED DOUBLE DIAPHRAGM PUMPS

COUNTRY OF ORIGIN : ITALY, CHINA

APPLICATIONS :

- CLEANING & HYGIENE
- WATER & INDUSTRY

MECHANICAL-RETURN DIAPHRAGM DOSING PUMP

INTERIOR PART MATERIALS



AIR-OPERATED DOUBLE DIAPHRAGM PUMPS



POLYPROPYLENE

Wide chemical compatibility.
General purpose.



ALUMINIUM

Wide range of solvent and hydrocarbons resistance.
Good level of abrasion resistance.



PVDF+CF

Conductive PVDF: Strong chemical resistance to acids.
High temperature resistance.
Groundable.



SS316

Stainless steel 316: High level of corrosion and abrasion resistance.



POMC

Acetal: Wide range of solvent and hydrocarbons resistance.
Good level of abrasion resistance.





UMEKA SOLUTECH CO., LTD.

UMEKA SOLUTECH CO., LTD.
บริษัท ยูเมก้า โซลูเทค จำกัด

28/18 Soi Laem Kratue, Sukhumvit Road,
Noen Phra, Mueang Rayong, Rayong 21150 Thailand.



+66 6 1078 7976



sales@umekasolutech.com



www.umekasolutech.com